

#NEVERFORGET



Carmen Schentrup



Scott Beigel



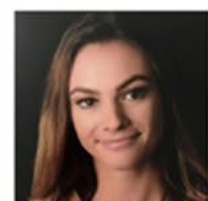
Gina Montalto



Alaina Petty



Chris Hixon



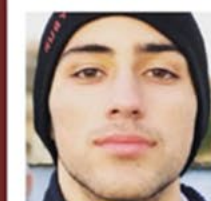
Meadow Pollack



Alyssa Alhadeff



Aaron Feis



Joaquin Oliver



Martin Duque Anguiano



Cara Loughran



Nicholas Dworet



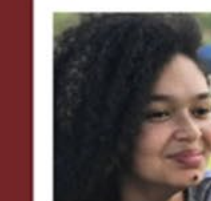
Peter Wang



Alex Schachter



Jaime Guttenberg



Helena Ramsay



Luke Hoyer



FLORIDA DEPARTMENT OF
EDUCATION
fldoe.org

Florida's Harm Prevention and Threat Management Model: Awareness for All School Staff

How to report student threats or concerning behavior

SCHOOL SAFETY

is everyone's responsibility, and it must be the number one priority in Florida's schools.

**It is your responsibility
to report.**

Let's learn **what** to report,
who to report to,
when to report and
how to report.

What to report: **Threats and Concerning Behaviors**

Threat

Communication or behavior indicating that an individual poses a danger to the safety of school staff or students through acts of violence, or behavior that would cause harm to self or others.

- Includes communication or behavior characteristic of a person who is on the pathway to violence, and may be expressed/communicated behaviorally, orally, visually, in writing, electronically, or through any other means.
- A threat is not a communication or behavior that is an obvious joke or unequivocally known by the observer to be innocuous.

Concerning Behavior

An observable behavior that elicits concern in others regarding the safety of an individual or those around them.

- May be prohibited behavior, but also might be other behaviors that elicit concern.
- Does not necessarily imply or predict that an individual or group will become violent.
- Serves as an indicator that the student may need intervention or increased supports to prevent the situation from progressing.

Examples of Concerning Behaviors

- Unusual social distancing or isolation of subjects from peers and family members
- Sullen or depressed behavior from an otherwise friendly and positive person
- Out-of-context outbursts of verbal or physical aggression
- Increased levels of agitation, frustration and anger
- Confrontational, accusatory or blaming behavior
- An unusual interest in or fascination with weapons
- Fixation on violence as a means of addressing a grievance
- Aggression toward animals

Be aware of clusters or patterns of concerning behaviors in your students.

Warning Signs

Who to report to:
The Chair or Vice Chair

Your School's SBTMT Chair or Vice Chair

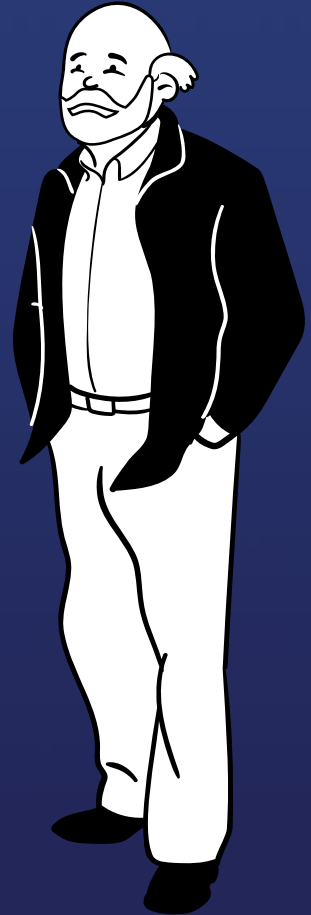
Concerns are reported to your school Chair.

Who is our school Chair?

If your Chair is unavailable, report to your school Vice Chair.

Who is our school Vice Chair?

If you are not sure, report to your Principal.



When to report:
Immediately!

How to report:
In person or electronically

Different methods to report

You can report concerning behaviors in multiple ways:

- Verbally
- Email
- Text
- FortifyFL

What is the preferred method of reporting in our school?

After a concern is reported:

A school-based multidisciplinary team will review reported concerns and take appropriate action.

The team may establish interventions to ensure the safety of all students and staff.

The team may also provide resources to the student of concern to promote successful outcomes.

Questions?